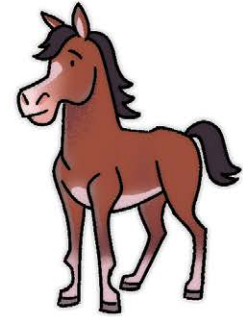
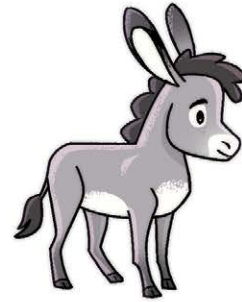
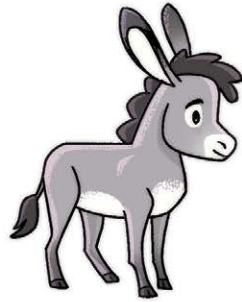
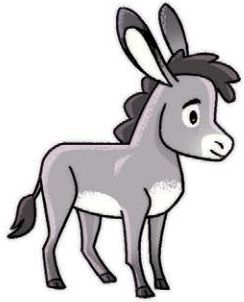


# Which One Is Different?

**INSTRUCTIONS:** Look at each row and decide which one is different. Draw an X on the different picture in each row.



NAME: \_\_\_\_\_



the **GOSPEL** PROJECT.



### **Jesus' Triumphal Entry**

Matthew 21; Mark 11;

Luke 19; John 12

#### **STORY POINT:**

People welcomed Jesus as their King.

#### **CHRIST CONNECTION:**

Jesus is our special King and Savior. Trusting in Jesus means loving Him. If we love Him, He will forgive us and give us life with Him forever.

#### **KEY PASSAGE PHRASE:**

If my people pray and turn from sin, I will forgive them.  
2 Chronicles 7:14

#### **BIG PICTURE QUESTION:**

What is repentance?  
Repentance is turning away from sin and turning to Jesus.

**Scan the QR code  
for resources to  
use at home!**



*Younger Preschool Activity Pages*  
**Easter Bonus Session 1**